

CORPORATE ASSOCIATES PRESIDENTIAL GROUP

TERMS OF REFERENCE: 2017 - 2021

1. IDENTITY AND ROLE

The Corporate Associates Presidential Group (CAPG) is a Board-level committee established by the President of the ISSMGE in 2011 to develop actions and activities to enhance the commercial sector of the ISSMGE.

2. PURPOSE

The purpose of the CAPG is:

- To provide a home and a voice within the ISSMGE for the commercial sector of the international geotechnical community.
- To partner with the academic and research community within the ISSMGE in identifying and promoting relevant research, translating research findings into practice, implementing new technology and providing feedback on successes and failures.
- To promote the advancement of best geotechnical practice in line with the established state-of-the-art.

3. CORPORATE ASSOCIATES

Corporate Associates of the ISSMGE are companies including geotechnical consultants, contractors, equipment manufacturers, product manufacturers and suppliers, and software houses. An annual membership fee (currently USD1500) is payable.

At present, there are approximately 30 Corporate Associates. The aim is to double this number.

The benefits of membership include involvement in ISSMGE technical activities, access to technical information, opportunities to network and exposure through ISSMGE conferences, on the ISSMGE website and other major platforms.

4. COMPOSITION OF THE CAPG

The CAPG comprises:

- a) The chair (appointed by the President)
- b) The vice chair (appointed by the ISSMGE)
- c) A coordinator to assist the chair in running the CAPG (selected by the CAPG members)
- d) One company representative chosen by each Corporate Associate.

The chair of the CAPG may invite selected company representatives to form a core group who will attend to the activities of the CAPG between CAPG meetings.

5. ACTIVITIES

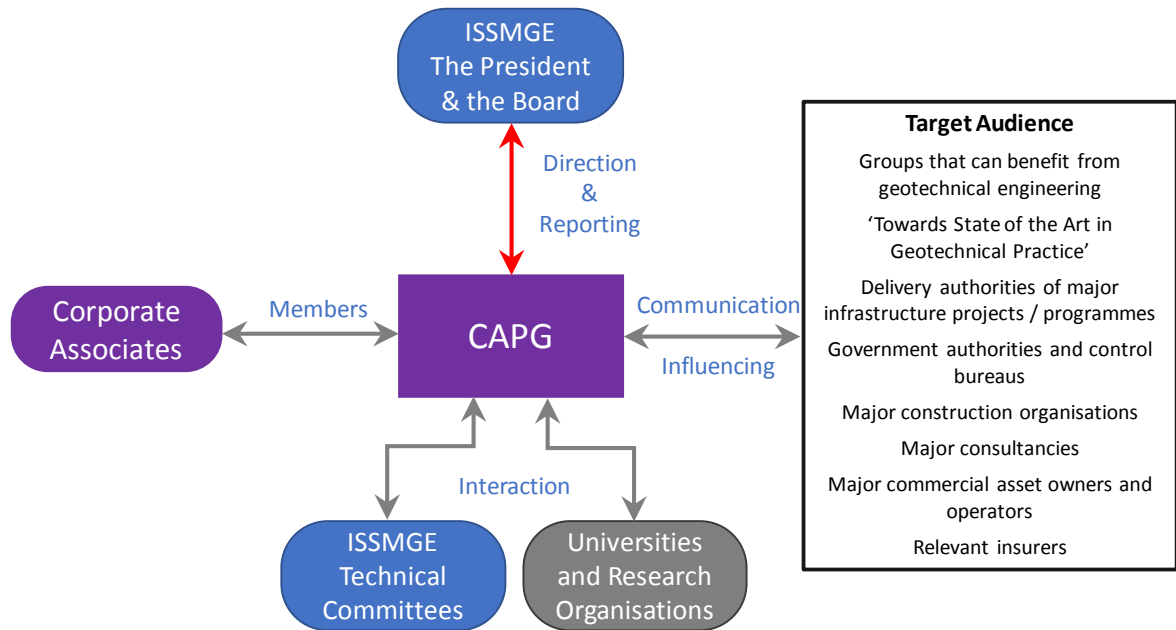
During the 2013 – 2017 term, the CAPG achieved considerable success in cooperating with ISSMGE Technical Committees through the Technical Oversight Committee and the implementation of a global survey on bridging the gap between the state-of-the-art and the state-of-practice.

Activities proposed for the current term (2017 – 2021) are:

- a) Take note of the terms of reference of the technical committees, particularly those concerned with the application of geotechnical knowledge and, where appropriate, assist these committees in identifying topics of importance to Corporate Associates.
- b) Encourage CAPG members to serve on technical committees either as corresponding members or member society representatives.
- c) Interact with other Board-level Committees including the Technical Oversight Committee.
- d) Evaluate and disseminate of the results of the 2017 global survey.
- e) Assess the merits of a follow-up survey aimed at identifying challenges and shortcomings in geotechnical practice and practical research requirements.
- f) Interact with the organisers of the Regional Conferences in 2019 and the International Conference in 2021 to promote the interests and involvement of Corporate Associates.
- g) Organise Geo-contractor / Geo-consultant forums and CAPG workshops at major ISSMGE conferences.
- h) In line with the aims of the ISSMGE, encourage diversity within the CAPG in terms of professional sectors, gender and age.
- i) Promote the benefits of Corporate Associate membership of the ISSMGE and encourage wider membership, including recruiting more companies / universities / asset-owner organisations to join the ISSMGE as Corporate Associates.

6. INTERACTIONS

The sketch below shows interactions between the CAPG and key stakeholders in the geotechnical industry.



7. MEETINGS

The CAPG will meet at least once a year by teleconference or in person.

The core group will meet or communicate on an ad-hoc basis at approximately six week intervals.

There are normally two face-to-face meetings of the Board, including the CAPG chair, every year and two Council Meetings in 2019 and 2021.

8. ACCOUNTABILITY AND REPORTING

The CAPG is accountable directly to the President of the ISSMGE.

The chair of the CAPG will report annually to the Board of the ISSMGE.

Meeting expenses for members will be the responsibility of the companies they represent.

Revision 2: 08 December 2017.

Document source: D:\Alljobs\0017_ISSMGE\CAPG\ToR\ISSMGE CAPG terms of reference 17-21 Rev2.docx