

INTERNATIONAL SOCIETY FOR SOIL MECHANICS AND GEOTECHNICAL ENGINEERING



This paper was downloaded from the Online Library of the International Society for Soil Mechanics and Geotechnical Engineering (ISSMGE). The library is available here:

<https://www.issmge.org/publications/online-library>

This is an open-access database that archives thousands of papers published under the Auspices of the ISSMGE and maintained by the Innovation and Development Committee of ISSMGE.

The paper was published in the proceedings of the 20th International Conference on Soil Mechanics and Geotechnical Engineering and was edited by Mizanur Rahman and Mark Jaksa. The conference was held from May 1st to May 5th 2022 in Sydney, Australia.

A new type of pile: the shaft grouted driven concrete pile

Un nouveau type de pieu: le pieu battu en béton préfabriqué, injecté au fût

Pablo Ruiz-Terán

Ferrovial Construction, Madrid, Spain

César Sagaseta Millán

University of Cantabria, Santander, Spain

Jose Luis Arcos Álvarez, Carlos Cano Barreiro & Rafael Gil Lablanca

Rodio Kronsa, Madrid, Spain

ABSTRACT: The work presented in this paper focuses on a new type of pile; the shaft grouted driven concrete pile, protected under an international patent. The pile has a square cross section with a hollow tube along its longitudinal axis, connected to a network of secondary lateral tubes. Each lateral tube, perpendicular to the pile axis, directly connects the main axial hollow tube with the pile shaft and is fitted with one-way valve. Following the driving process, the pile skin is pressure grouted to increase its shaft capacity, achieving a greater friction than in a conventional driven concrete pile. Consequently, several advantages have been identified: the total pile length in a deep foundation can be reduced, cutting down on construction period and reducing foundation cost. Several practical cases are also presented herein, discussing the results. With the aim of assessing the increase in pile shaft capacity, dynamic load tests were conducted before and after the injection process. These tests showed how the shaft capacity was significantly increased due to the pressure grouting, with shaft capacities between two and seventeen times greater than the ones registered before the injection process.

RÉSUMÉ : L'article présente un nouveau type de pieu: le pieu battu en béton préfabriqué, injecté au fût, qui a été protégé par un brevet international. Le pieu a une section transversale carrée avec un tube creux le long de son axe longitudinal, connecté à un réseau de tubes latéraux secondaires. Chaque tube latéral, perpendiculaire à l'axe, directement relie le tube axial avec la surface latérale du pieu et est équipé d'une valve à sens unique. À la suite du battage, la surface latérale du pieu est injectée pour augmenter sa résistance au cisaillement. En conséquence, plusieurs avantages ont été identifiés: la longueur totale des pieux peut être réduite, réduisant le délai de construction et le coût de la fondation. Certaines applications pratiques sont également présentées dans l'article, discutant les résultats. Pour évaluer l'augmentation de la capacité des pieux, des essais de charge dynamique ont été réalisés avant et après le processus d'injection, montrant que la capacité des pieux augmenté à valeurs entre deux et dix-sept fois supérieures à ceux enregistrés avant le processus d'injection.

KEYWORDS: driven pile; shaft grouting; one-way valve; shaft capacity; dynamic load test; carbonated sands.

1 INTRODUCTION

Piles are usually classified on the basis of their behaviour, construction procedure, materials used and cross-sectional shape. According to the construction methodology, piles can be classified as in situ piles and driven piles. In situ drilled and grouted piles have been extensively used in carbonated soils, where only very low shaft capacities can be developed. There is a sound understanding of the performance of this pile type, thanks to the extensive experimental research conducted so far, the existence of numerous field tests (both at full and reduced scales), as well as laboratory tests (at reduced scale).

Due to the high installation costs associated to the construction of drilled and grouted piles, alternatively grouted driven piles with circular hollow sections were developed. For this particular pile type, there is a limited number of field tests; both at full and reduced scales; and a relatively large number of laboratory tests. Nevertheless, due to the uncertainty associated to grout cover thickness, the difficulties for measuring thickness and estimating grout shrinkage, grouted driven piles with circular hollow sections have never been used for practical applications.

In order to improve the driving process, both for steel and concrete piles, several alternatives have been considered and studied so far. Shaft grouting has been used in these piles either filling in the pile-soil gap generated during the driving or filling in lateral membranes attached to the pile surface. So far, for practical applications, only the first system has been used for driven steel piles with open cross-sections.

The work presented in this paper focuses on a new type of pile: the shaft grouted driven concrete pile. This new pile type has been protected under an international patent (Ruiz Terán et al. 2016).

2 SHAFT GROUTED DRIVEN PILES. PREVIOUS EXPERIENCE

2.1 Ideas to ease the pile driving

The idea of shaft grouted drive pile was first presented by the company Raymond International (Phares 1974).

The intention was to use a tubular steel driven pile with an oversized shoe, in order to reduce the shaft friction during the driving process. At the same time, the annular space around the pile would be filled with cement grout, as shown in Figure 1.

This concept was supported by full scale field tests. Even it was performed in real construction scenarios but only using I-section steel profiles (Richwien et al. 2008).

McVay et al. 2009 used a driven concrete pile with a jetting water in the base in order to assist the pile driving and later on, injected the side membranes attached to the pile and the pile tip with cement grout, as shown in Figure 2.

Thiyyakkandi et al. 2013 justify the use of membranes through two reasons: first, to confine the grout zone, to improve radial expansion during pile grouting and to prevent the mixing

of the grout with the soil, which improves bonding between the grout and the pile. This idea was supported by reduced scale tests.

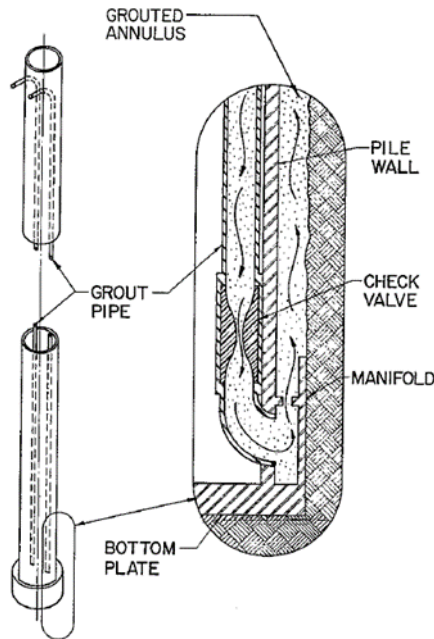


Figure 1. Grouted tubular steel driven pile presented by Raymond International

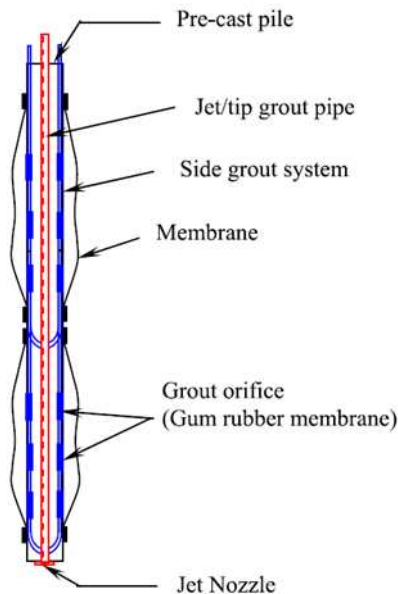


Figure 2. Driven concrete pile with side membranes

2.2 Ideas to increase the strength of the pile-soil interface

The company Solmarine -the offshore branch of Soletanche- developed also the idea of grouted concrete driven pile to increase the shaft resistance.

Barthelemy et al. 1986 set out that, similarly to the use of the grouting techniques in on-shore applications of piles, micropiles or anchorages, it would be possible to put them in use in offshore applications but with tubular steel driven piles instead of the procedures based on driven or grouted drilled piles.

Barthelemy et al. 1987 suggested that through the grouting it could be possible to increase the shaft resistance, because the pile

diameter would be increased and so the horizontal effective stress to vertical effective stress ratio and the pile-soil friction angle.

Once the pile would be driven and grouted, it could be grouted achieving a shaft resistance equal to or higher than that of a grouted drilled pile. Then, the tubular steel grouted driven piles are born to combine the lower cost of the conventional driven piles with the higher shaft capacity of the grouted drilled piles (Barthelemy et al. 1988).

These authors proposed to use injections of both IGU (from the French term "Injection Globale Unitaire") and IRS ("Injection Répétitive et Sélective") types. In any case, they indicated the necessity of a thorough control of the grouting pressure, the injected volume, the discharge and the grout properties.

Barthelemy et al. 1987 proposed that the system must accomplish with the following limitations: it must not alter the driving process conditions, it must allow the possibility of boring in the cross-section central part of the pile, it must be capable of supporting the inherent conditions of the driving, to be simple to use and without needing a large number of people and/or auxiliary means. Finally, it must be safe.

Taking into account the above comments, the company finally chose a system with the following configuration: one or several injection tubes next to the pile shaft inner side, T-connections outside the pile, holes in the shaft surface fitted with one-way valves, protected tubes at the pile tip and injection lines with double packers (Rickman & Barthelemy 1988).

2.3 Field tests at full scale

The company Solmarine initially validated the idea through five field tests at 1:1 scale (Barthelemy et al. 1986).

Later, the same company carried out a new test at full scale, as shown in Figure 3, with financial support from the joint venture ARGEMA and the firm Petrobras. Solmarine made three new similar field tests, now for the company Esso Australia, confirming again the reliability of this type of pile (Le Tirant et al. 1989).

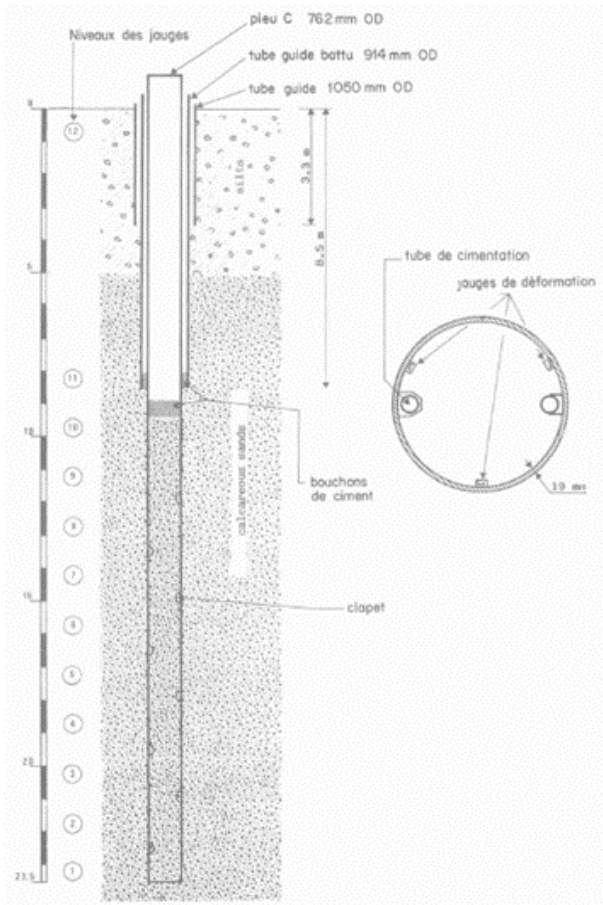


Figure 3. Shaft grouted tubular steel driven pile layout

Randolph et al. 1996 presented the results of three steel driven piles with closed tip, grouted along the shaft. The piles were equipped with two inner tubes diametrically opposed, following the system described by Solmarine.

2.4 Field tests at reduced scale

The joint venture ARGEMA performed also tests with grouted driven piles of 75 mm diameter and 2 m long (Nauroy et al. 1988).

2.5 Laboratory tests at reduced scale

The École Nationale Supérieure de Mécanique of Nantes (France) carried out an experimental program with laboratory tests on piles from 20 to 40 mm diameter, in order to study the peak shear strength and the shape of the sealing bulb (Levacher 1988; Levacher & Bennabi 1990; Bennabi & Levacher. 1994, 1996).

The University of Western Australia made also a similar experimental study, on piles from 20 to 50 mm diameter, in order to study the peak shear strength, the residual shear strength, the grout coverage and the behaviour under cyclic loading (Joer & Randolph 1994; Joer et al. 1994; Gunasena et al. 1995; Randolph et al. 1996; Gunasena 1998; Joer & Randolph 1998; Joer et al. 1998).

2.6 Pros and cons weigh-up. Present situation

The main advantages of the shaft grouted tubular steel driven pile are: the reduction of the length of the pile, the reduction of the pile's execution time, the reduction of the cost of the foundation and the possibility of performing dynamic loading tests.

The main shortcomings are: the lack of coverage that could lead to possible corrosion problems, problems related to quality control and possibility of the grout shrinkage.

The final conclusion is that the shaft grouted tubular steel driven pile has never been used before in a real construction scenario.

3 THE SHAFT GROUDED DRIVEN CONCRETE PILE

3.1 Introduction

Shaft grouted driven concrete pile has been born taking advantage of some concepts raised within the field of offshore foundations. It solves each and every disadvantage for which the shaft grouted tubular steel driven pile has never been applied on site to date.

While generally in this type of in-situ piles there exists a decompression of the ground during their drilling, in the driven piles the ground is displaced radially as the pile penetrates into the ground. For this reason, the shaft resistance of a driven pile is equal to or greater than that of an in-situ pile.

On the other hand, the shaft resistance of a pressure-grouted micropile is higher than that of an in-situ pile; since, by means of injection, it is possible to displace the ground radially.

Taking into account also that if a pile can be driven, it can be injected, then, it is possible to drive a concrete pile and later to inject its shaft with a pressured grout, so that this pile has a shaft resistance greater than that of a conventional driven concrete pile (Ruiz Terán 2016).

The goals that have been pursued when increasing the shaft resistance are the following: to reduce the length of the piles, to reduce the execution time and to reduce the cost of the foundation.

3.2 Shaft grouted driven concrete pile

The pile has a square cross section with a hollow tube along its longitudinal axis, which is connected to a network of secondary lateral tubes. Each lateral tube, placed in perpendicular direction to the pile axis, directly connects the main axial hollow tube with the pile surface, and is fitted with one-way valve, as shown in Figure 4 and 5.

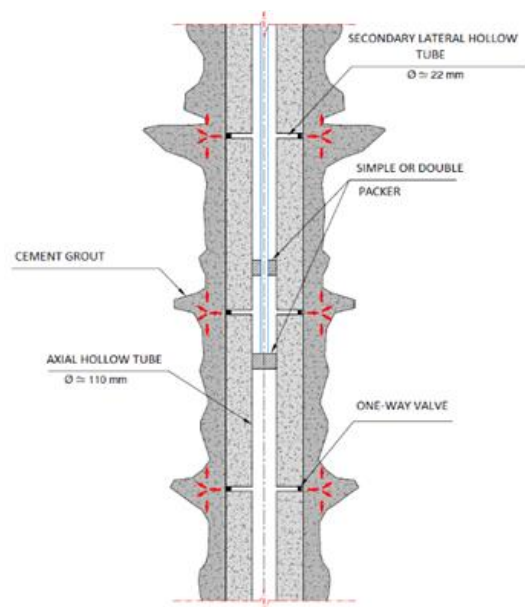


Figure 4. Longitudinal section of the shaft grouted driven concrete pile

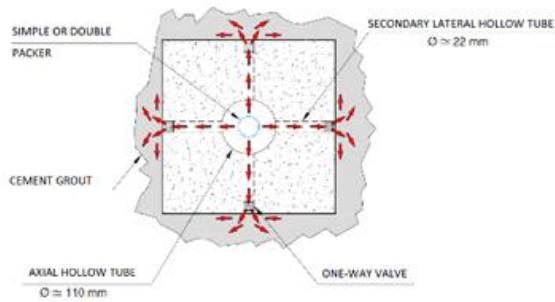


Figure 5. Cross section of the shaft grouted driven concrete pile.

In this way, the pile shaft resistance can be increased by means of the injection of cement grout with expansive additive or a pre-dosed compensated shrinkage product along the pile shaft, through one-way valves, as shown in Figure 6.



Figure 6. Shaft grouted driven concrete pile full-scale model. Grouting test

To grout the pile shaft under pressure conditions it is possible to choose between a single or a double packer, as shown in Figure 7.



Figure 7. Single and double packer (courtesy of Petrometalic)

Among all the different grouting methods available, the IRS is the one that best suits to the variability of the ground as it is possible to grout the needed volume at the required pressure for each injection phase.

The injection is controlled by a real-time parameter recording, verifying that it is carried out according to the established criteria, as shown in Figure 8.

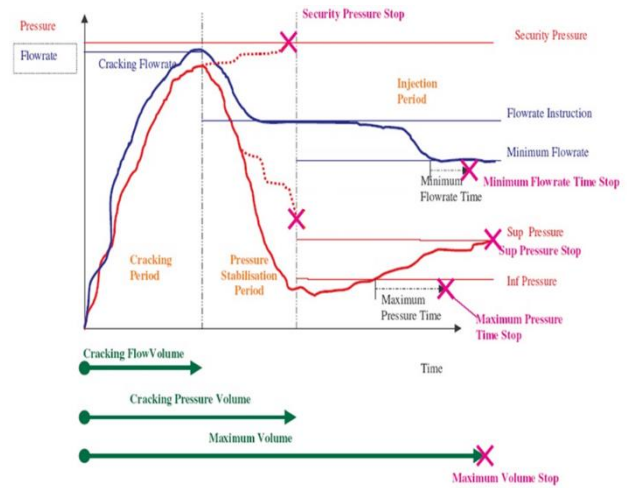


Figure 8. Pressure regulation during the grouting process (courtesy of Soletanche-Bachy)

A pressure-volume injection limit can be established and programmed, so it is possible to take real-time decisions without penalizing the execution times. The recording of injection parameters also allows for a further analysis of results and the verification of suitability of the established prescriptions.

3.3 Practical cases

3.3.1 Soil characteristics

The shaft grouted driven concrete pile had been used in different types of soils: carbonated sands, silty sands, sandy silts, sands, gravels and volcanic pyroclasts.

Carbonated soils are known for having a significantly lower shaft friction resistance value than expected through the conventional calculation methods.

The current trend of deep foundations in carbonated soils is to move away from the driven piles, being the preferred alternative the grouted drilled piles. Due to their high installation costs, the shaft grouted driven concrete pile is a good alternative for foundations.

3.3.2 Analysis of the results of the load tests

In order to verify the pile load capacity and the increase of the shaft friction as a result of the injection, dynamic load tests were performed both before and after grouting.

When comparing the results before and after the injection, the shaft friction was multiplied by two to seventeen times, as shown in Figure 9 and 10.

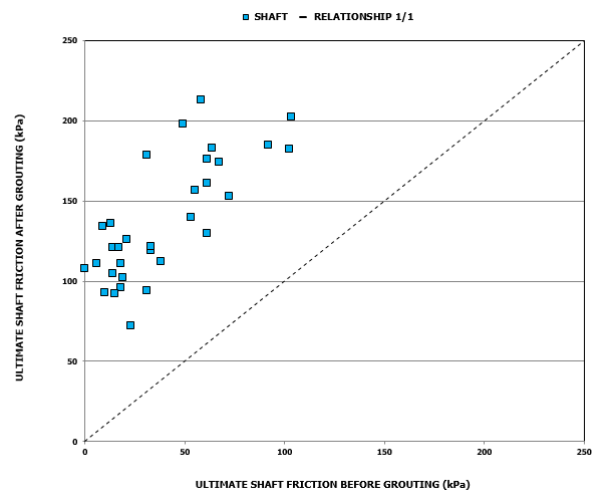


Figure 9. Ultimate shaft friction before and after grout injection

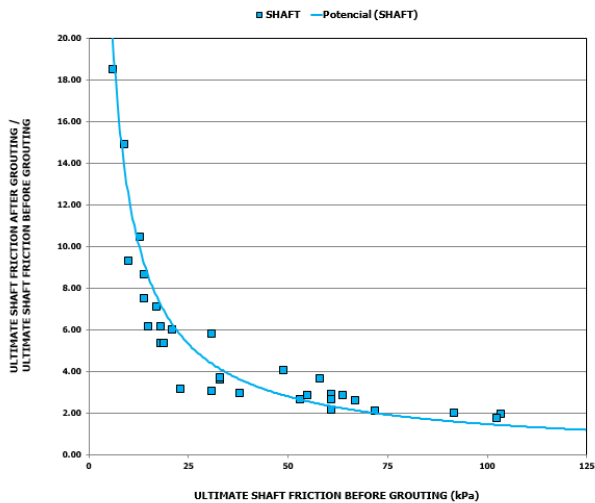


Figure 10. Ultimate shaft friction increase

The curves proposed by Bustamante et al. 2009, used for single global or multiple repeatable post grouting piles calculation, can be used in order to perform a pre-design for this type of piles. Since the pile shaft friction is above these curves, it can be considered that the design remains on the safe side.

3.3.3 Relationship between the results of the load tests and the injected volumes

Parallely to Gouvenot & Gabaix 1975, an analysis of the relationship between the shaft capacity of the pile and the injected volume was carried out in each pile, as shown in Figure 11.

It is observed that the ultimate shaft capacity increases above what the lateral surface of the pile does (Figure 12), which is only attributable to the increase of the effective horizontal stresses and the increase of the grout-soil friction angle.

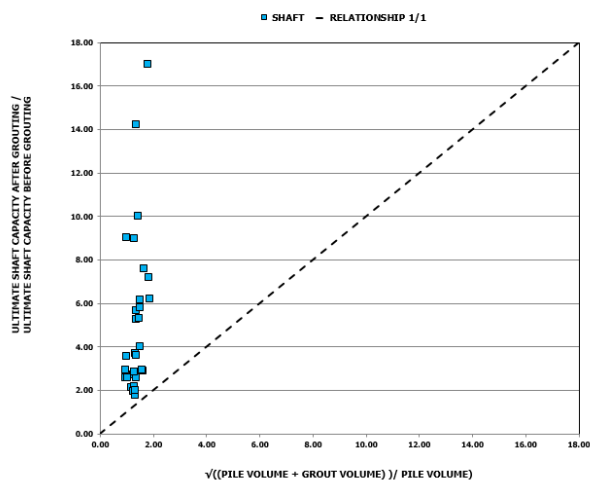


Figure 11. Relationship between the ultimate shaft capacity increase and the injected volume



Figure 12. Excavated shaft grouted driven concrete pile

It is possible to establish the relationship between the ultimate shaft capacity of the pile and the equivalent diameter (Figure 13) as:

$$\Delta Q_{hf} = (3 \text{ to } 40) * \Delta \Phi_{equiv} \quad (1)$$

where ΔQ_{hf} is the ultimate shaft capacity increase (%) and $\Delta \Phi_{equiv}$ is equivalent diameter increase (%).

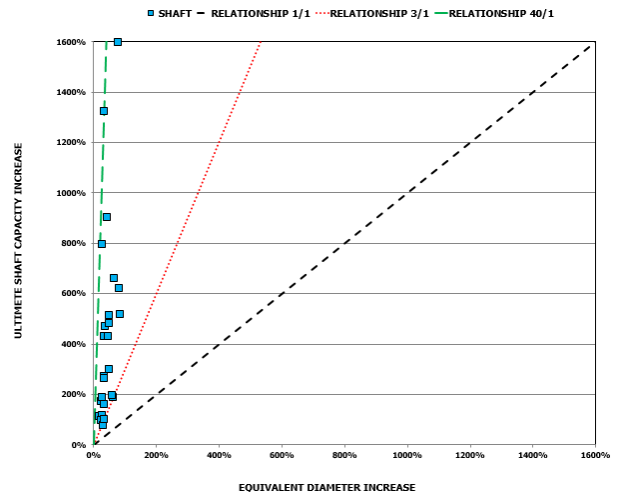


Figure 13. Relationship between the ultimate shaft capacity increase and the equivalent diameter increase

In other words, 3 to 33% increase of the ultimate shaft capacity is due to the equivalent diameter and 67 to 97% is due to the effective horizontal stresses and the grout-soil friction angle.

4 CONCLUSIONS

The work presented in this paper focuses on a new type of pile; the shaft grouted driven concrete pile, protected under an international patent.

The pile has a square cross section with a hollow tube along its longitudinal axis, connected to a network of secondary lateral tubes. Each lateral tube, perpendicular to the pile axis, directly connects the main axial hollow tube with the pile shaft and is fitted with one-way valve. Following the driving process, the pile skin is pressure grouted to increase its shaft capacity, achieving a greater friction than in a conventional driven concrete pile. Consequently, several advantages have been identified:

- The total pile length in a deep foundation can be reduced.
- The construction period can be cut down.

- The foundation cost can be reduced.

Several practical cases are also presented, discussing the results. With the aim of assessing the increase in pile shaft capacity, dynamic load tests were conducted before and after the injection process. These tests showed how the shaft capacity was significantly increased due to the pressure grouting, with shaft capacities between two and seventeen times greater than the ones registered before the injection process.

5 REFERENCES

- Barthelemy, H., Bustamante, M., Gouvenot, D., Martin, R. 1986. Pressure grouted piles: a solution to offshore foundations problems. *Proc. 3rd International Conference on Numerical Methods in Offshore Piling*, 481-494.
- Barthelemy, H., Geffriaud, J.P., Legendre, Y. 1987. Grouted driven piles. *Proc. International Offshore Mechanics and Arctic Engineering Symposium*, 319-327.
- Barthelemy, H., Martin, R., Le Tirant, P., Nauroy, J.F., Cipriano de Meideros, J.Jr. 1987. Grouted Driven Piles: an Economic and Safe Alternative for Pile Foundations. *Proc. 19th Offshore Technology Conference*, 427-436. OTC 5409.
- Barthelemy, H., Martin, R., Nauroy, J.F., Le Tirant, P., Cipriano de Meideros, J.Jr. 1988. Pull-out Tests on a Grouted Driven Pile in Calcareous Sands. *Proc. 6th International Symposium on Offshore Engineering*, 243-255.
- Bennabi, A., Levacher, D. 1994. Injection des sables a l'aide d'un nouveau produit polymere. *Actes 3emes Journees Nationales Genie Civil-Genie Cotier*, 283-289.
- Bennabi, A., Levacher, D. 1996. Stabilization of soils and grouting of model driven piles in calcareous sands. *Proc. 2nd International Conference on Ground Improvement Geosystems*, 15-20.
- Bustamante, M., Gambin, F., Gianeselli, L. 2009. Pile Design at Failure Using the Ménard Pressuremeter: an Up-Date. *Proc. International Foundation Congress and Equipment Expo*, 127-134.
- Gouvenot, D. y Gabaix, J.C. 1975. A New Foundation Technique Using Piles Sealed By Cement Grout Under High Pressure. *Proc. 7th Annual Offshore Technology Conference*, 645-656. OTC 2310.
- Gunasena, U. 1998. Grouted Driven Model Piles in Calcareous Soil. *Thesis, University of Western Australia*.
- Gunasena, U., Joer, H.A., Randolph, M.F. 1995. Design Approach for Grouted Driven Piles in Calcareous Soil. *Proc. 27th Offshore Technology Conference*, 271-280. OTC 7669.
- Joer, H.A., Randolph, M.F. 1994. Modelling of the shaft capacity of grouted driven piles in calcareous soils. *Proc. International Conference on Design and Construction of Deep Foundations*, 873-887.
- Joer, H.A., Randolph, M.F. 1998. Capacity of model grouted piles in calcareous sediments. *Proc. 7th International Conference and Exhibition on Piling and Deep Foundations*.
- Joer, H.A., Randolph, M.F., Gunasena, U. 1994. Grouted driven piles in calcareous soil. *Proc. 13th International Conference on Soil Mechanics and Foundation Engineering*, 1673-1676.
- Joer, H.A., Randolph, M.F., Gunasena, U. 1998. Experimental Modeling of the Shaft Capacity of Grouted Driven Piles. *Geotechnical Testing Journal* 21 (3), 159-168.
- Le Tirant, P., Nauroy, J.F., Brucy, F., Barthelemy, H., Kervadec, J.P. 1989. Frottement latéral des pieux dans les sables carbonatés. *Revue Française de Géotechnique* 49, 51-66.
- Levacher, D. 1988. Static, tension or cyclic testing of model piles driven in calcareous formations. *Proc. International Conference on Calcareous Sediments*, 223-230.
- Levacher, D., Bennabi, A. 1990. Injection des pieux battus dans les sables carbonatés. *Annales de L'Institut Technique du Batiment et des Travaux Publics* 489, 59-72.
- Nauroy, J.F., Brucy, F., Le Tirant, P. 1988. Skin friction of pile in calcareous sands. *Proc. International Conference on Calcareous Sediments*, 239-244.
- Phares, L. 1974. Grouting Piles While Driving. *Proc. 6th Offshore Technology Conference*, 513-520. OTC 2083.
- Randolph, M.F., Joer, H.A., Khorshid, M.S., Hyden, A.M. 1996. Field and Laboratory Data from Pile Load Tests in Calcareous Soil. *Proc. 28th Offshore Technology Conference*, 327-336. OTC 7992.
- Richwien, A., Vollstedt, W., Woltering, S. 2008. Re-Construction of a lock - experiences with driven grouted piles. *Proc. 11th Baltic Sea Geotechnical Conference on Geotechnics in Maritime Engineering*, 91-98.
- Rickman, J.P., Barthelemy, H. 1988. Offshore construction of grouted driven pile foundations. *Proc. International Conference on Calcareous Sediments*, 313-319.
- Ruiz Terán, P. 2016. Una nueva tipología de pilotaje: pilote hincado de hormigón reinyectado por el fuste. *Thesis, University of Cantabria*.
- Ruiz Terán, P., Arcos Álvarez, J.L., Gil Lablanca, R., Cano Barreiro, C. 2016. International patent WO 2016/116653.
- Thiyyakkandi, S., McVay, M., Bloomquist, D., Lai, P. 2013. Measured and Predicted Response of a New Jetted and Grouted Precast Pile with Membranes in Cohesionless Soils. *Journal of Geotechnical and Geo-environmental Engineering* 139 (8), 1334-1345.